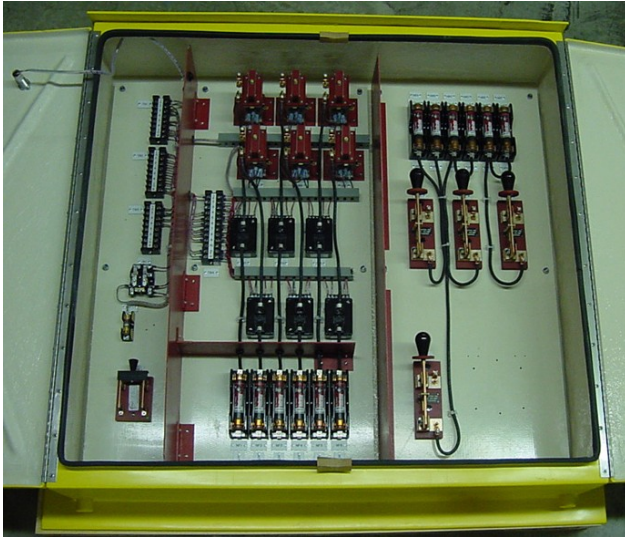


SWITCH AND RAIL HEATER CABINETS



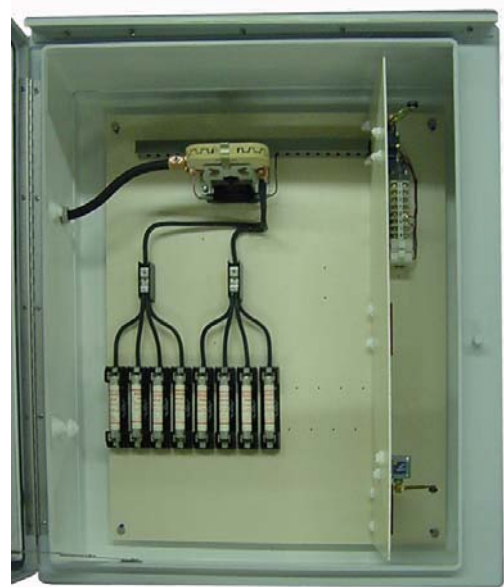
Contact Rail Heater Control Cabinet with (6) Contactors,
(6) sets of Load Fuses, W/ Provisions for Repeater Case
Used by CTA



#050528 600 VDC Switch Heater Control Unit
With 12 Load Fuses
Also available #050529 9 Load Fuses; #050527
6 Load Fuses
Used By CTA



#050526 600 VDC Switch Heater Control Unit
With 3 Load Fuses
Used by CTA



#050108 8 Circuit, 1000 VDC Switch Heater
Control Unit for
St. Louis Metro
Also available #050112 12 Load Fuses; and
#050104 4 Load Fuses

POWERSWITCH Switch and Rail Heater Control Units are custom made in accordance with specific contract specifications. Shown here are some examples of assemblies similar to as supplied at Chicago Transit Authority, and St. Louis Metro.

POWERSWITCH, INC.

815 E. CHERRY ST.
TROY, MO 63379
PH 1-800-526-6740
FAX 636-528-8937

EMAIL: pssales@normandymachine.com